

Baugröße Beschreibung

Han

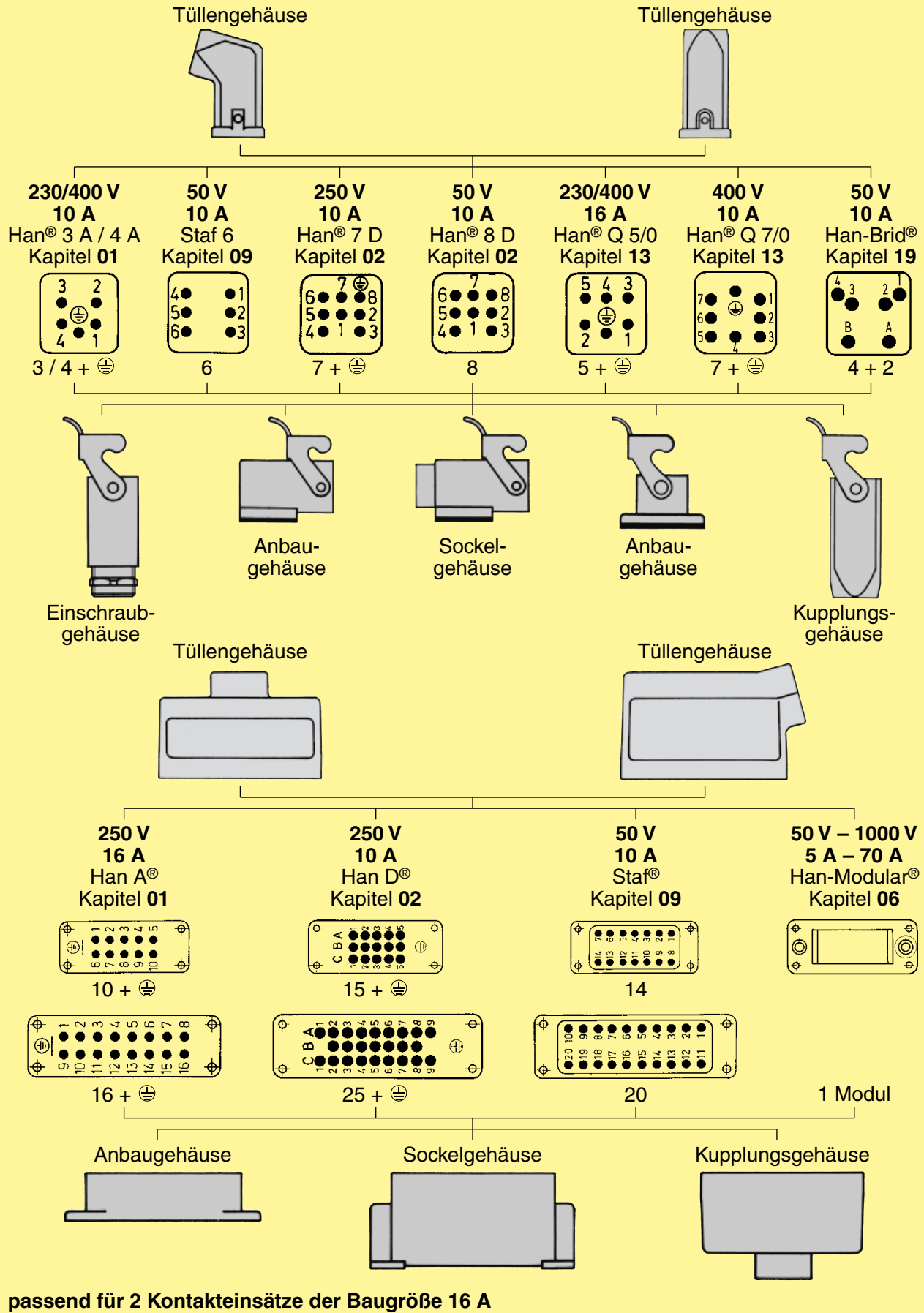
A

3

10

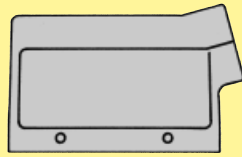
16

32

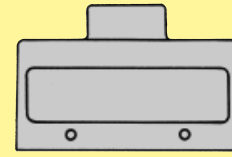


Baugröße Beschreibung

B



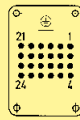
Tüllengehäuse



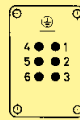
Tüllengehäuse

250 V 10 A Han D® Kapitel 02	250 V 10 A Han DD® Kapitel 02	500 V 16 A Han E® Han® ES Kapitel 03	500 V 16 A Han® EE Kapitel 03	400/690 V 35 A Han® HsB Kapitel 07	830 V 16 A Han Hv E® Han® Hv ES Kapitel 04	160 V – 690 V 10 A – 100 A Han-Com® Kapitel 05	50 V – 5000 V 5 A – 200 A Han-Modular® Kapitel 06
---	--	--	--	---	--	---	--

6



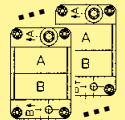
24 + ⚡



6 + ⚡

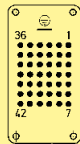


10 + ⚡

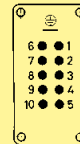


2 Module

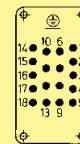
10



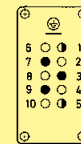
42 + ⚡



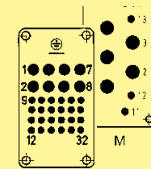
10 + ⚡



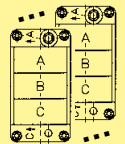
18 + ⚡



3 + ⚡

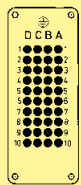


4/4 + ⚡
8/24 + ⚡

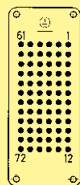


3 Module

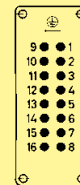
16



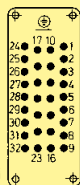
40 + ⚡



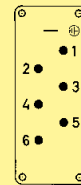
72 + ⚡



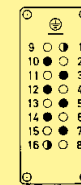
16 + ⚡



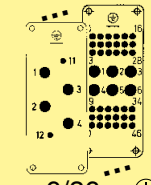
32 + ⚡



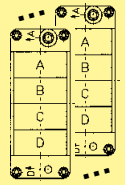
6 + ⚡



6 + ⚡

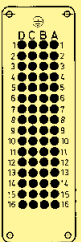


6/36 + ⚡
4/2 + ⚡

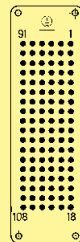


4 Module

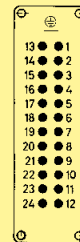
24



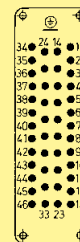
64 + ⚡



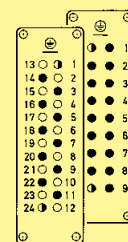
108 + ⚡



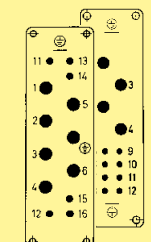
24 + ⚡



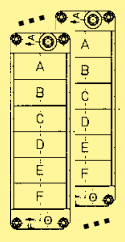
46 + ⚡



16 + ⚡
10 + ⚡

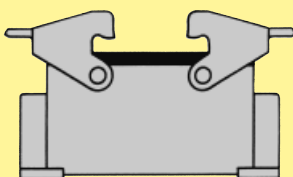


4/8 + ⚡
6/6 + ⚡

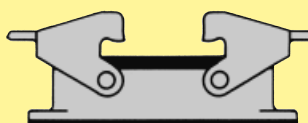


6 Module

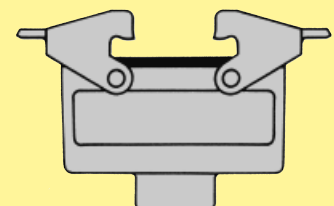
Sockelgehäuse



Anbaugehäuse



Kupplungsgehäuse



32

passend für 2 Kontakteinsätze der Baugröße 16 B

48

passend für 2 Kontakteinsätze der Baugröße 24 B

Han

00

07