

Technical characteristics

**Ethernet interface**

Number of ports	5 (2 x IP 65 / IP 67 – 3 x IP 20) 8 (2 x IP 65 / IP 67 – 6 x IP 20)
Cable types	Shielded Twisted Pair (STP) or Unshielded Twisted Pair (UTP), Category 5
Data rate	10 Mbit/s or 100 Mbit/s Auto-crossing, Auto-negotiation, Auto-polarity
Maximum cable length	100 m (with Category 5 cable acc. to EN 50 173)
Termination, device-side	On the outside of control cabinet (female): 2 x M12, D-coding 2 x Han® 3 A RJ45 2 x Han® 3 A Hybrid On the inside of control cabinet: 3x / 6x RJ45
Diagnostics (via LED)	<ul style="list-style-type: none"> <li>• Status Link – Green</li> <li>• Data transfer (Act) – Yellow flashing</li> </ul>
Topology	Line, Star or mixed

**Power supply**

Input voltage	24 V DC (18 to 30 V DC)
Termination, device-side	On the inside of control cabinet: 5-pole screw terminal, pluggable for redundant power supply additional 6-pole screw terminal, plug-in, for Hybrid supply (eCon 6080-HA only)
Diagnostics (via LED)	Power supply

**Alarm signalling contact**

Diagnostics (via LED)	Change-over contact, potential-free, 24 V DC / 0.5 A (on the inside of control cabinet) 3-pole pluggable screw contact Error – Red
-----------------------	--

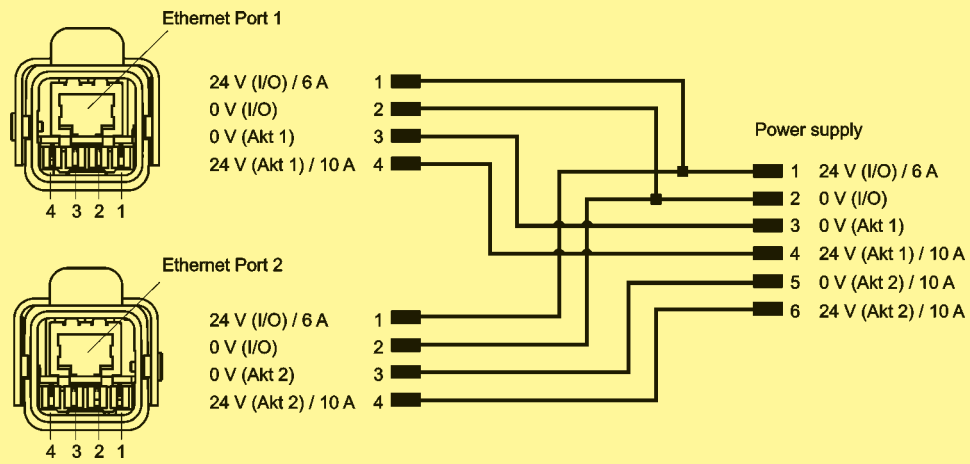
**Design features**

Housing material	Aluminium die-cast
Dimensions (W x H x D)	105 x 40 x 105 mm (without connectors)
Degree of protection acc. to DIN 60 529	IP 65 / IP 67      On the outside of control cabinet connector IP 20              On the inside of control cabinet
Mounting	Directly onto control cabinets or terminal boxes
Weight	approx. 0.8 kg

**Environmental conditions**

Operating temperature	-40 °C to +70 °C 0 °C to +55 °C (Hybrid)
Storage temperature	-40 °C to +85 °C
Relative humidity	10 % to 95 % (non-condensing)

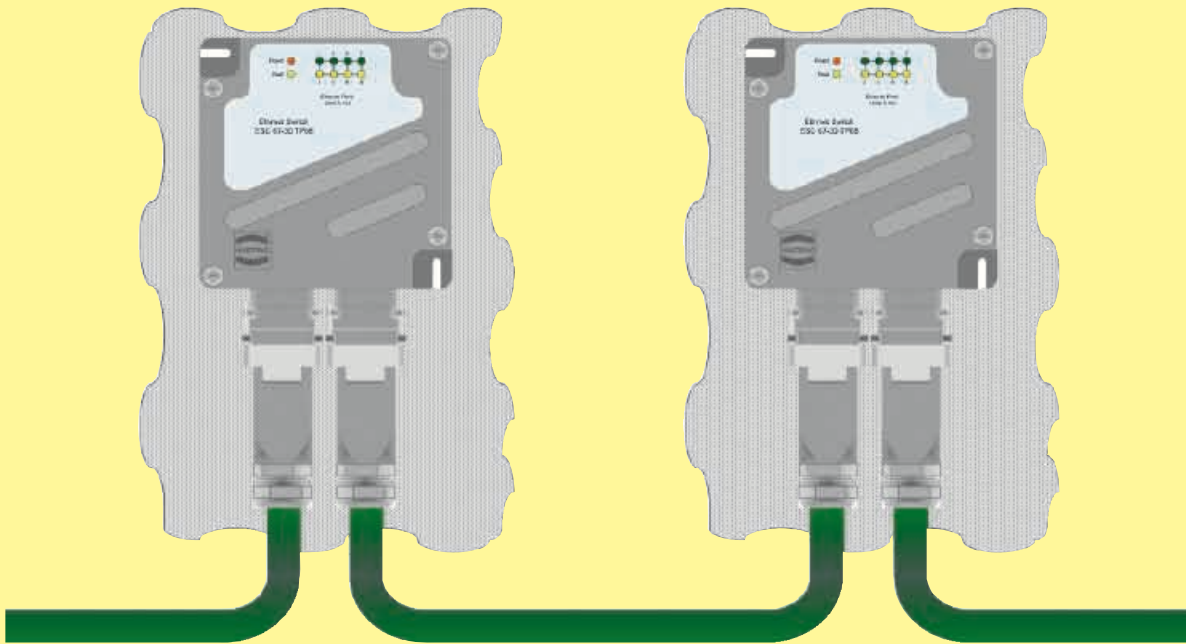
## HARTING eCon 6080-HA – Hybrid connector – Contact assignment 24 V DC



## HARTING eCon 6080-HA – Power supply, alternative 1

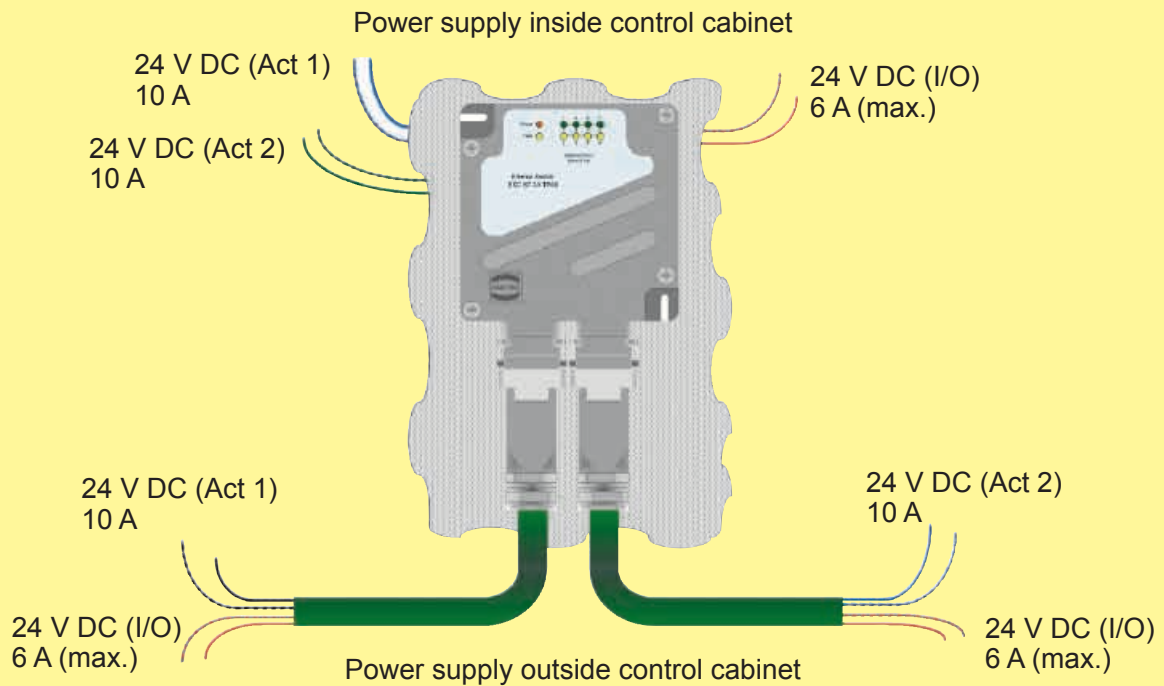
Voltage supply and distribution are made by both hybrid ports.

A feed over the post plug connector in the inside of the control cabinet is not implemented.



## HARTING eCon 6080-HA – Power supply, alternative 2

The feed is made by the post plug connector on the control cabinet inside of the Ethernet Switch, the distribution by means of the hybrid plug connectors.



eCon 6000

## Accessories HARTING eCon 6000

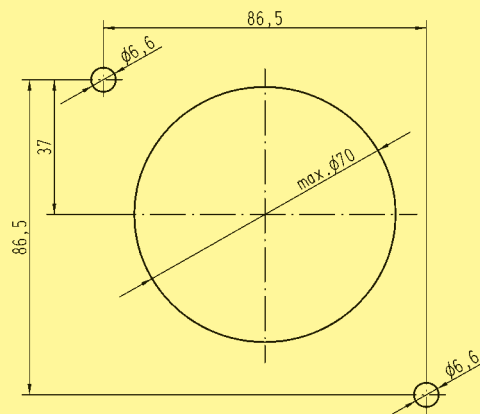
Identification

Part number

Mounting plate  
on the inside of control cabinet

20 80 000 0004

## Mounting information





## Ethernet Switch HARTING eCon 6050-A

5-port In-between Ethernet Switch for networking of control cabinets in line topology

Unmanaged

IP 67 / IP 20

PROFINET compatible

EtherNet/IP compatible

Number of ports, Copper / Termination 5x 10/100Base-T(X) / 2x Han® 3 A RJ45 (IP 65 / IP 67)\*  
3x RJ45 (IP 20)

Input voltage / Termination 24 V DC / 5-pole screw terminal, pluggable  
redundant power supply

Permissible range (min/max) 12 V to 30 V DC

Input current approx. 100 mA (at 24 V DC)

Alarm signalling contact Change-over contact, potential-free, 24 V DC / 0.5 A  
(on the inside of control cabinet)  
3-pole pluggable screw contact

Housing material Aluminium die-cast

Dimensions (W x H x D) 105 x 40 x 105 mm (without connectors)

Weight approx. 0.8 kg

Operating temperature -40 °C to +70 °C

Approvals cUL (in preparation)

Identification

Part number

Drawing

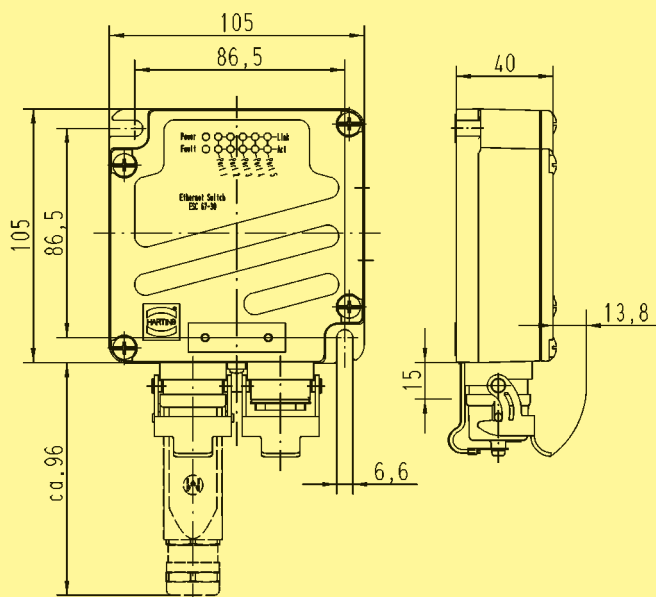
Dimensions in mm

HARTING eCon 6050-A

Fast Ethernet Switch

5 ports

20 73 305 3921





**Ethernet Switch**  
**HARTING eCon 6050-BA**  
 5-port In-between Ethernet Switch  
 for industrial line topologies (M12 system cabling)

Unmanaged	IP 67 / IP 20	PROFINET compatible <input checked="" type="checkbox"/>	EtherNet/IP compatible <input type="checkbox"/>
-----------	---------------	---	---

Number of ports, Copper / Termination 5x 10/100Base-T(X) / 2x M12, D-coding (IP 65 / IP 67)  
 3x RJ45 (IP 20)

Input voltage / Termination 24 V DC / 5-pole screw terminal, pluggable  
 redundant power supply

Permissible range (min/max) 12 V to 30 V DC

Input current approx. 100 mA (at 24 V DC)

Alarm signalling contact Change-over contact, potential-free, 24 V DC / 0.5 A  
 (on the inside of control cabinet)  
 3-pole pluggable screw contact

Housing material Aluminium die-cast

Dimensions (W x H x D) 105 x 40 x 105 mm (without connectors)

Weight approx. 0.8 kg

Operating temperature -40 °C to +70 °C

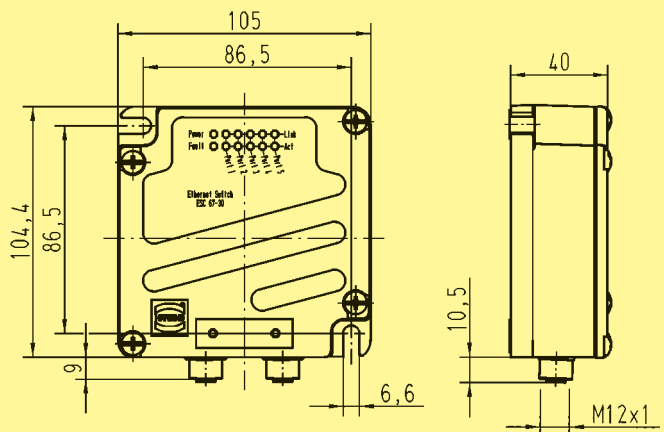
Approvals cUL (in preparation)

eCon 6000

Identification	Part number	Drawing	Dimensions in mm
----------------	-------------	---------	------------------

**HARTING eCon 6050-BA**  
 Fast Ethernet Switch  
 5 ports

20 73 305 3941





**Ethernet Switch**  
**HARTING eCon 6080-HA**  
 8-port In-between Ethernet Switch for hybrid line topologies

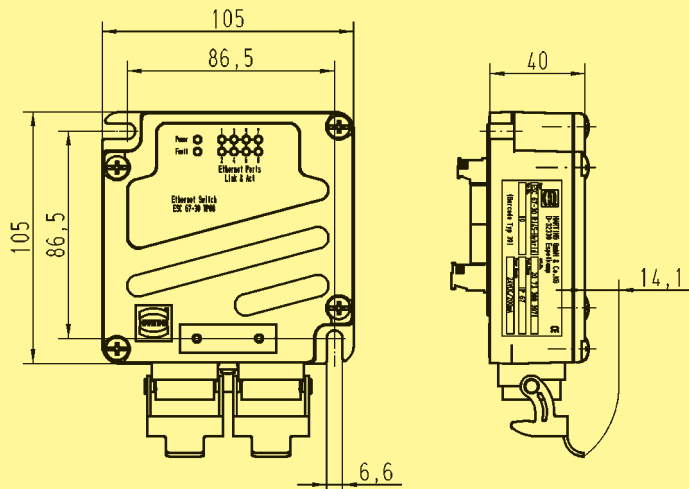
Unmanaged	IP 65 / IP 20	PROFINET compatible <input checked="" type="checkbox"/>	EtherNet/IP compatible <input type="checkbox"/>
-----------	---------------	---	---

Number of ports, Copper / Termination	8x 10/100Base-T(X) / 2x Han® 3 A RJ45 (IP 65 / IP 67)* 6x RJ45 (IP 20)
Input voltage / Termination	24 V DC / 5-pole screw terminal, pluggable redundant power supply 6-pole screw terminal, pluggable, for hybrid supply
Permissible range (min/max)	12 V to 30 V DC
Input current	approx. 150 mA (at 24 V DC)
Alarm signalling contact	Change-over contact, potential-free, 24 V DC / 0.5 A (on the inside of control cabinet) 3-pole pluggable screw contact
Housing material	Aluminium die-cast
Dimensions (W x H x D)	105 x 40 x 105 mm (without connectors)
Weight	approx. 0.6 kg
Operating temperature	0 °C to +55 °C
Approvals	cUL (in preparation)

Identification	Part number	Drawing	Dimensions in mm
----------------	-------------	---------	------------------

**HARTING eCon 6080-HA**  
 Ethernet Switch Hybrid  
 8 ports

20 73 308 3972



\* Order insert fixing screw 09 20 000 9918 separately