

Han® 3 A Angled Bulkhead Mounted Housing



Features

- Fixing with 4 screws for maximum security
- Large cabling space
- Excellent electro magnetic compatibility

Technical characteristics

Material	Zinc die-cast
Surface	standard version: Powder-coated RAL 7037 (grey) EMC version: non coated, electrically conductive
Seal	NBR
Limiting temperatures	-40 °C ... 125 °C
Degree of protection acc. to EN 60 529 in locked position	IP 44 IP 65/67 with use of sealing screw 09 20 000 9918

Identification

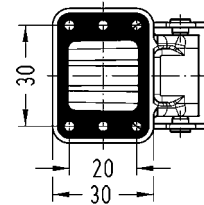
Part Number

Drawing

Dimensions in mm

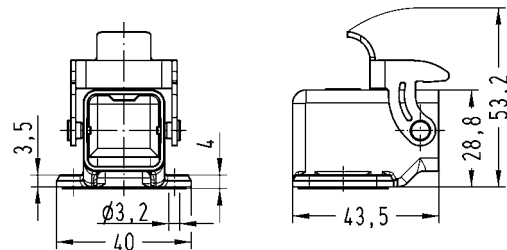
Angled bulkhead mounted housing

09 20 003 0810

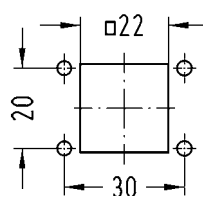


Angled bulkhead mounted housing for higher EMC requirements

09 62 003 0810



Panel cut out



HARTING Electric GmbH & Co. KG | Wilhelm-Harting-Straße 1 | D-32339 Espelkamp

2010-03-12

Fon: +49 57 72 47-97100 | Fax: +49 57 72 47-124

Internet: www.HARTING.com | E-Mail: HARTING.Electric@HARTING.com

Han® Data Sheet 0553



Features

- Allows assembly from both sides within the cabinet
- Excellent electro magnetic compatibility

Technical characteristics

Material	Zinc die-cast
Surface	standard version: Powder-coated RAL 7037 (grey)
	EMC version: non coated, electrically conductive
Seal	NBR
Limiting temperatures	-40 °C ... 125 °C
Degree of protection acc. to EN 60 529 in locked position	IP 44 IP 65/67 with use of sealing screw 09 20 000 9918

Identification

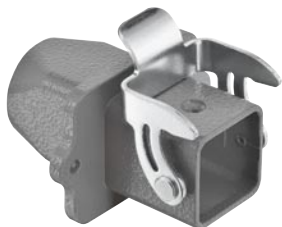
Part Number

M

Drawing

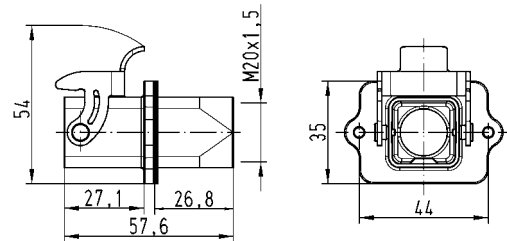
Dimensions in mm

Cable to cable housing



19 20 003 1120

M20

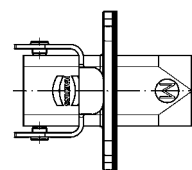


Cable to cable housing for higher EMC requirements



19 62 003 1120

M20



Panel cut out

